

Structural Options

The Mulberry

2,490 sqft



Main Floor



Optional Terrace Doors in place of sliders \$ 2,850

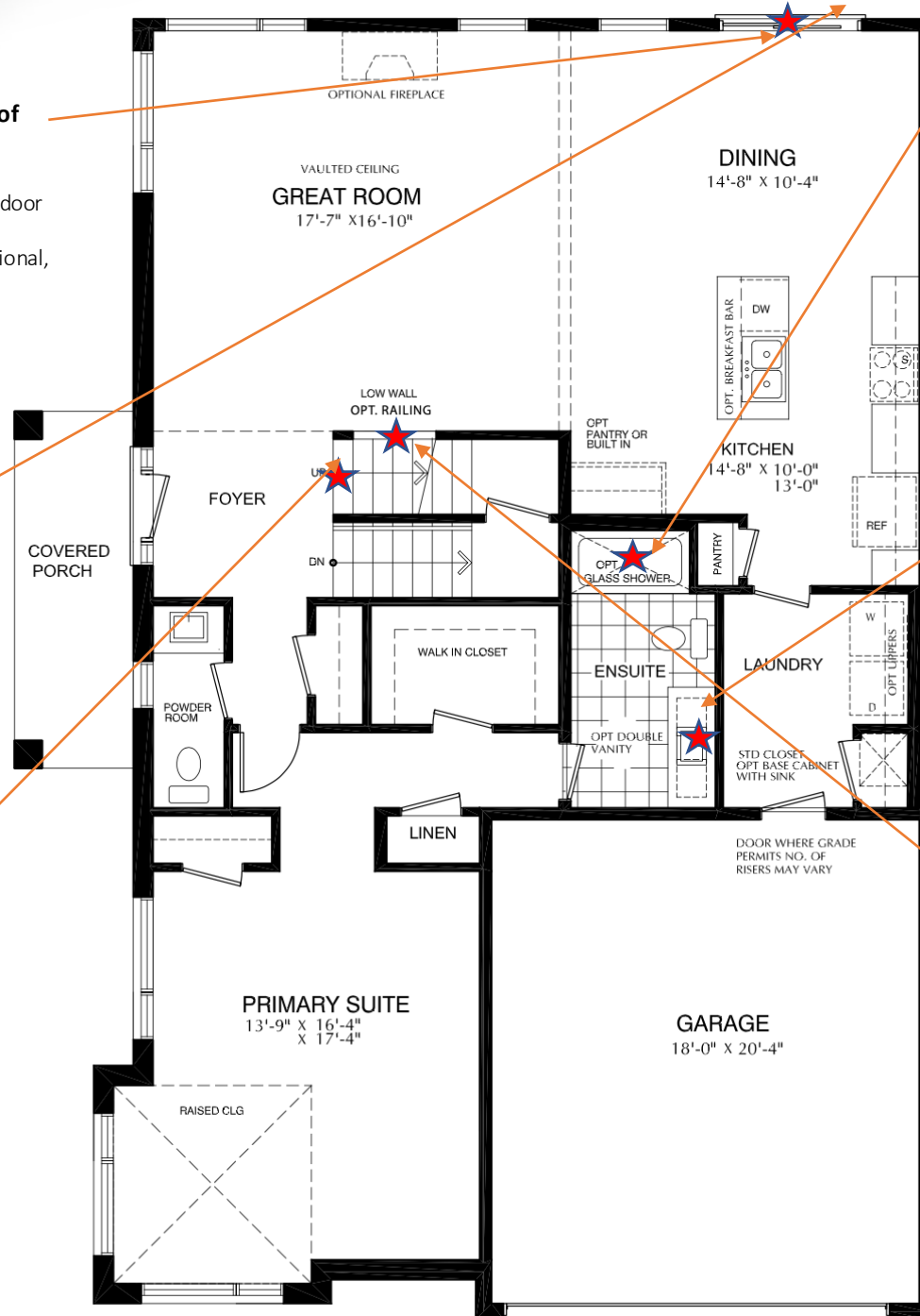
- Terrace doors in lieu of sliding door in great room
- One door is pinned and operational, one door operational

Optional Wood Deck \$12,000

- 10'x12' wood deck, approx. 120 sq.ft. including railing, spindles and stairs

Optional Oak Stairs \$10,950

- Main floor to loft oak stairs complete with standard railing and spindles



Optional Glass Shower with Acrylic Base \$6,800

- Glass shower with acrylic base, tiled walls
- Waterproof potlight



Optional Double Sink Vanity \$2,250

- Vanity complete with standard cabinetry, double undermount sinks, quartz countertop and faucets.



Optional Railing in lieu of Low Wall \$3,575

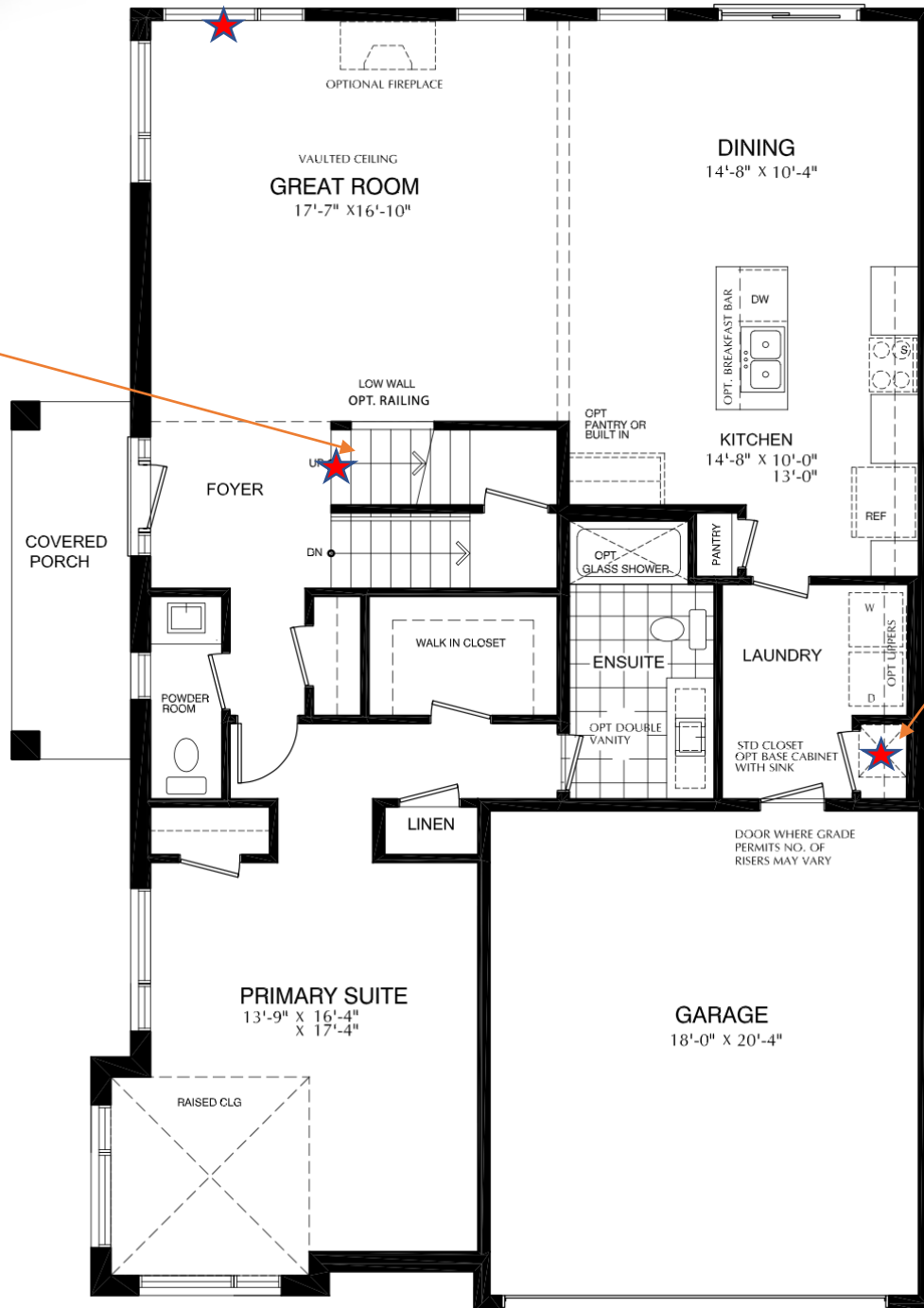
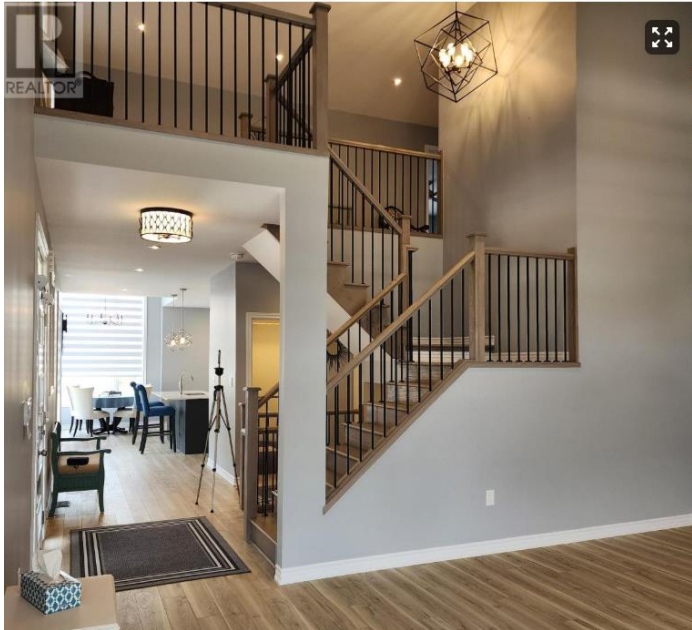
- Main floor railing in place of low wall complete with standard finishes



Main Floor

Optional Open Stairs to Basement \$15,950

- Optional railing on main floor included
- Optional railing in loft to be purchased separately
- Only sold with finished basements



Optional Laundry Base with Sink \$4,850

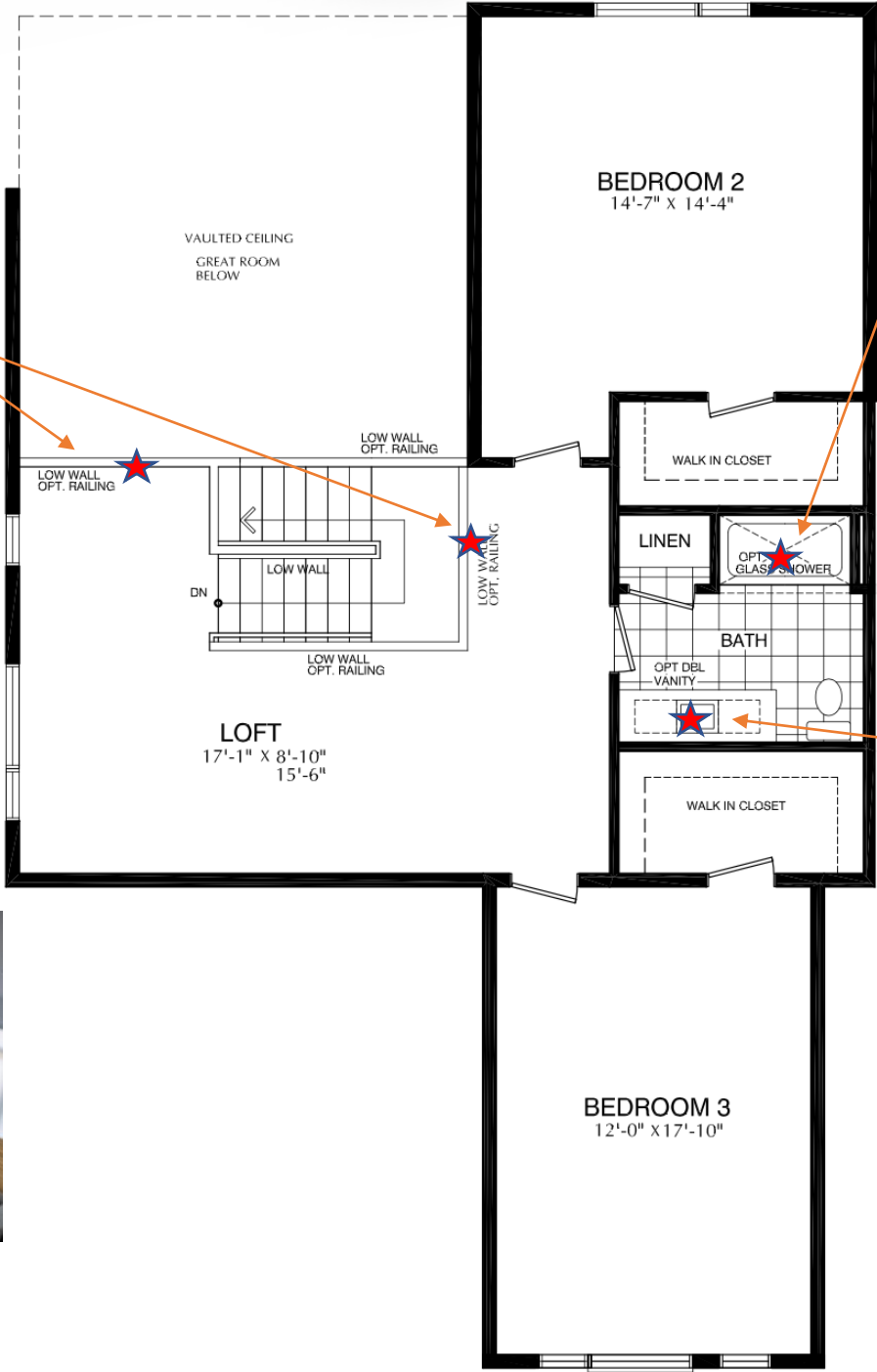
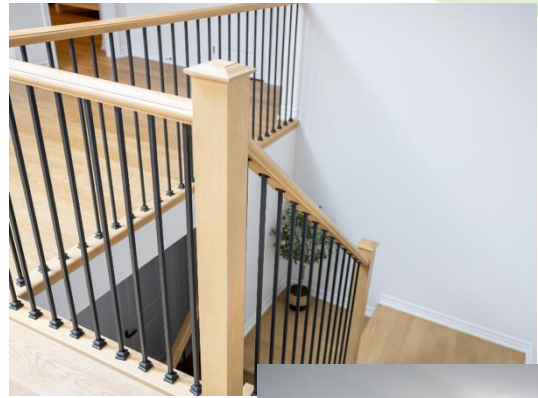
- Laundry base complete with standard cabinetry, undermount sink and faucet.
- Optional uppers priced out separately



Loft

Optional Loft Railing in lieu of Low Wall \$5,375

- Add railing in place of low wall in loft open to below for great room and at upper staircase



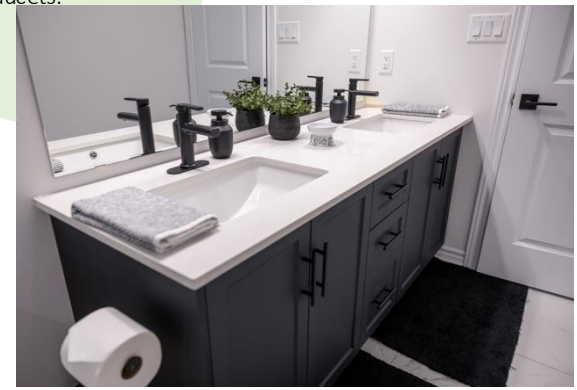
Optional Glass Shower with Acrylic Base \$6,800

- Glass shower with acrylic base, tiled walls
- Waterproof potlight



Optional Double Sink Vanity \$2,250

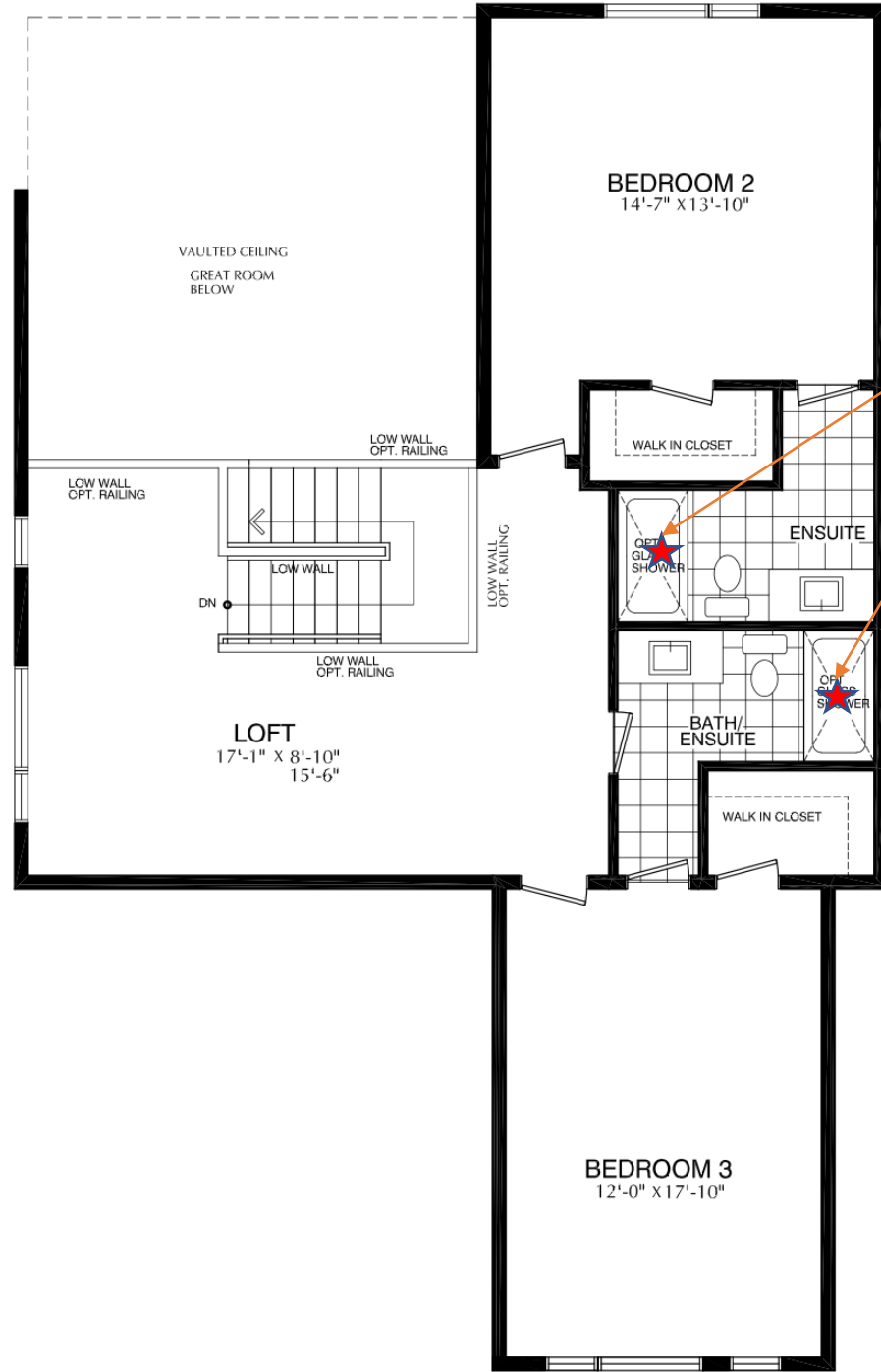
- Vanity complete with standard cabinetry, double undermount sinks, quartz countertop and faucets.



Optional Loft

Optional Loft Layout – Ensuities added to each bedroom in lieu of main bath

- Loft Ensuities added to each bedroom, complete with standard finishes
- WIC made smaller
- Vanity complete with standard cabinetry, double undermount sinks, quartz countertop and faucets.
- Shower/tub with tile surround



Optional Glass Shower with Acrylic Base

- Glass shower with acrylic base, tiled walls
- Waterproof potlight



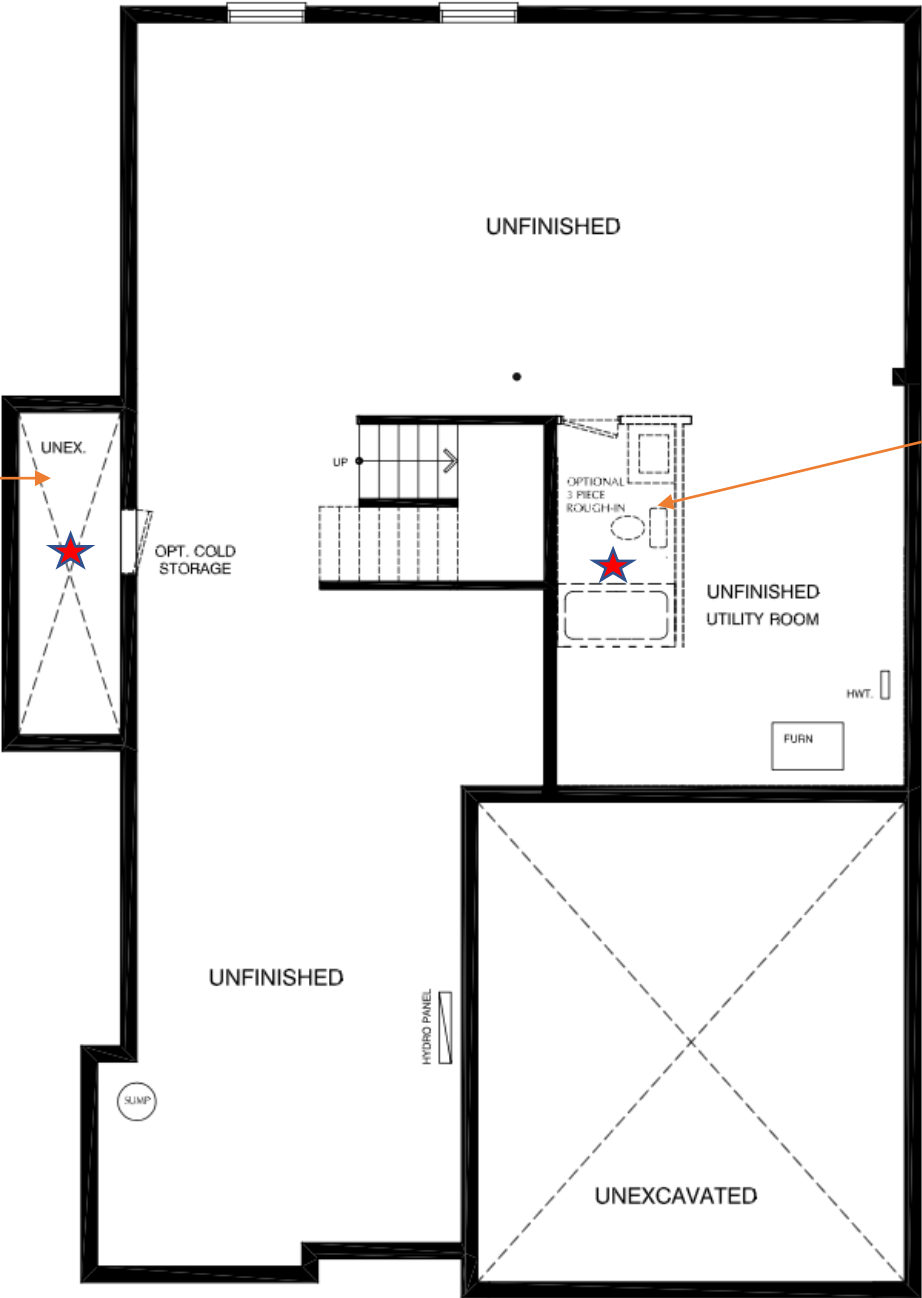
Basement

Optional Cold Storage \$5,950

- Complete with standard door, light and vent to exterior

Optional Bathroom Rough In 3 piece \$1,550

- Sink, toilet and shower drain only
- Waterline not included



Optional Finished Basement 1

Finished Basement 1 \$58,000

- Finished rec room
- Level 1 vinyl floor with vapour barrier
- Standard carpet grade stair to basement
- Finished 3 pc bath
 - Alcove tub/shower with tile surround,
 - Vanity complete with standard cabinetry, double undermount sinks, quartz countertop and faucets.
 - Ceramic tiled floor



Optional Cold Storage \$5,950

- Complete with standard door, light and vent to exterior

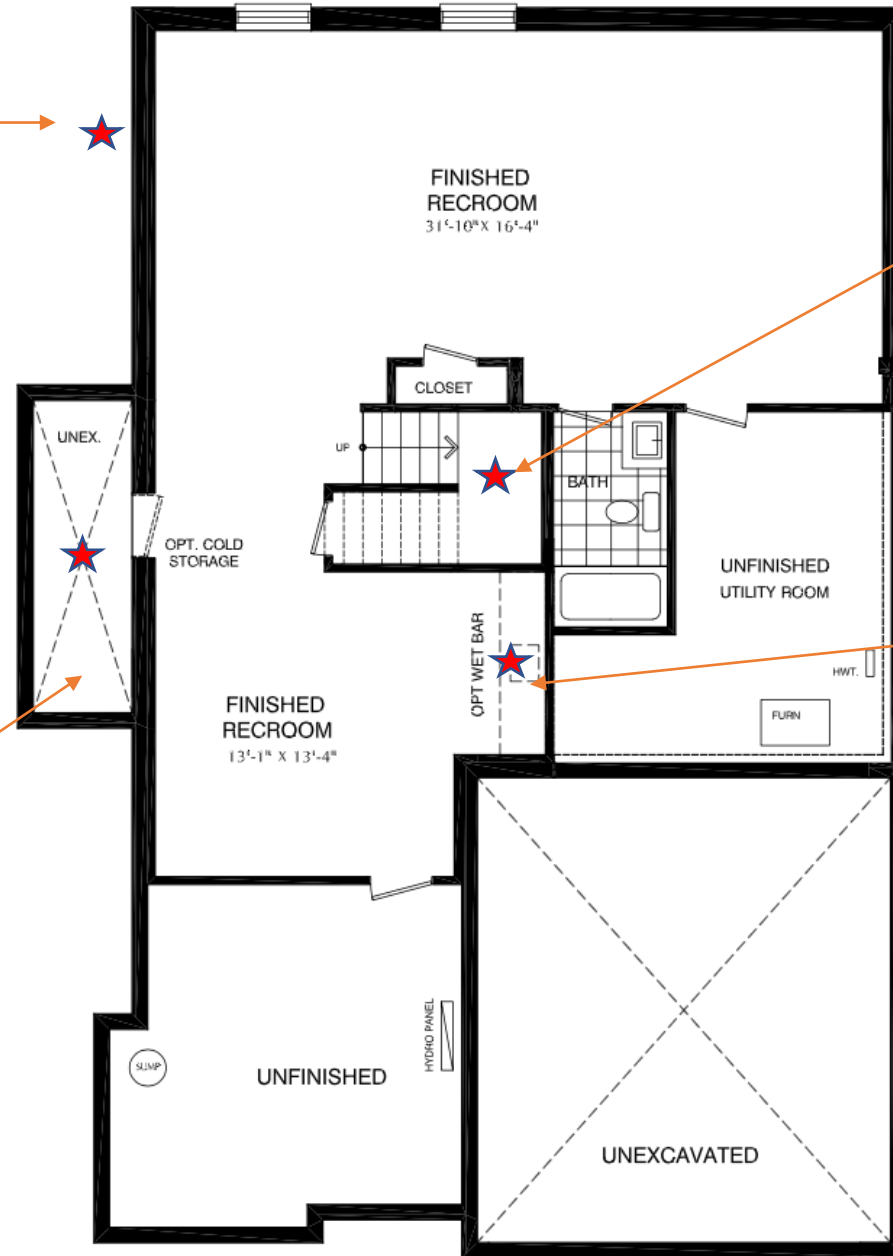
Optional Oak Stairs \$3,600

- Main floor to basement



Optional Wet Bar \$7,425

- Wet bar complete with standard cabinetry, quartz countertop, undermount sink and faucet
- Complete with plug and allocation for a bar fridge



Optional Finished Basement 2

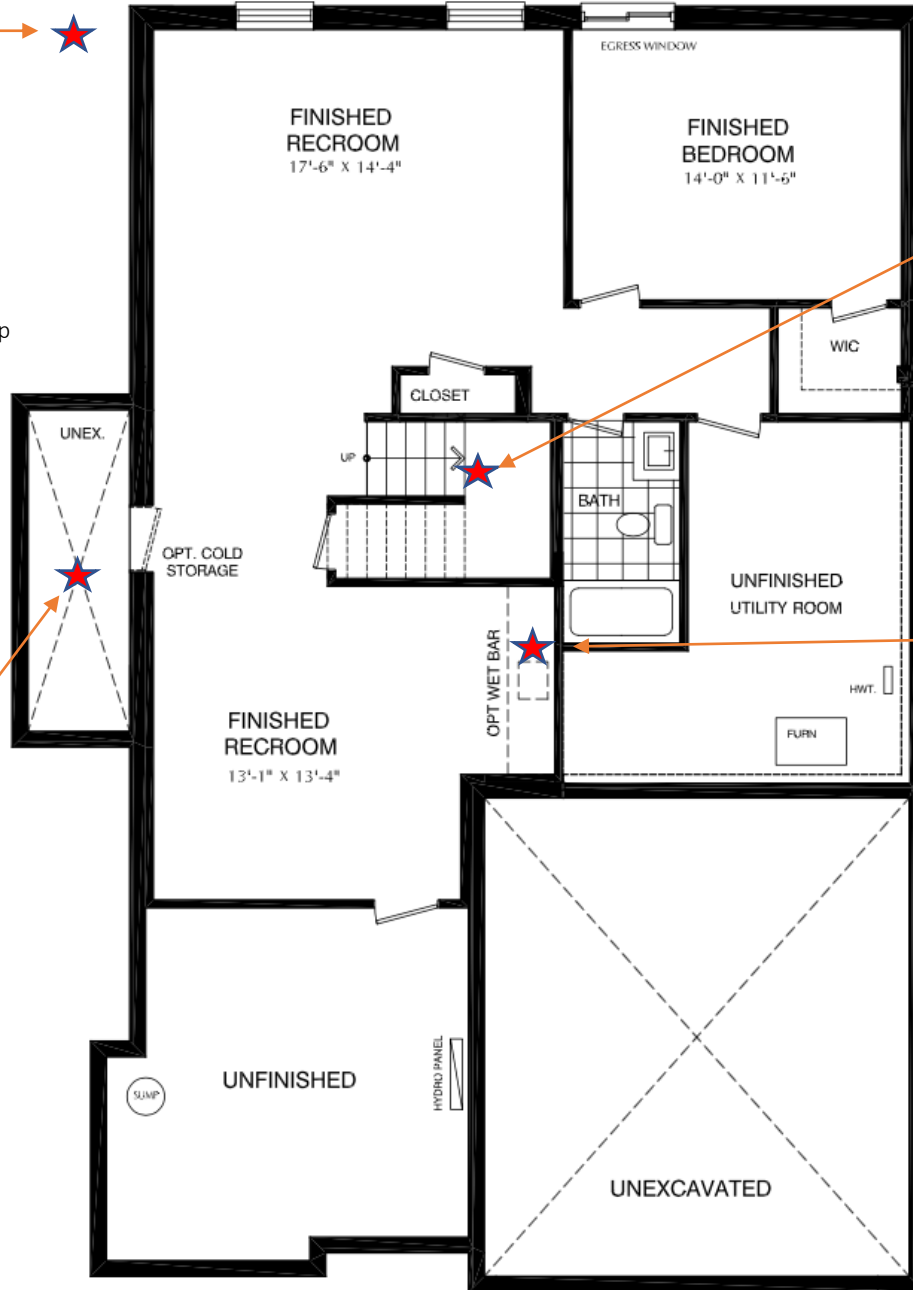
Finished Basement 2 \$68,000

- Finished rec room
- Finished bed/study w/WIC
- Egress window
- Level 1 vinyl floor with vapour barrier
- Standard carpet grade stair to basement
- Finished 3 pc bath
 - Alcove tub/shower with tile surround,
 - Vanity complete with standard cabinetry, double undermount sinks, quartz countertop and faucets.
 - Ceramic tiled floor



Optional Cold Storage \$5,950

- Complete with standard door, light and vent to exterior



Optional Oak Stairs \$3,600

- Main floor to basement



Optional Wet Bar \$7,425

- Wet bar complete with standard cabinetry, quartz countertop, undermount sink and faucet
- Complete with plug and allocation for a bar fridge

