



# Maple Grove

rivermill

*Your Best Life Yet!*

---

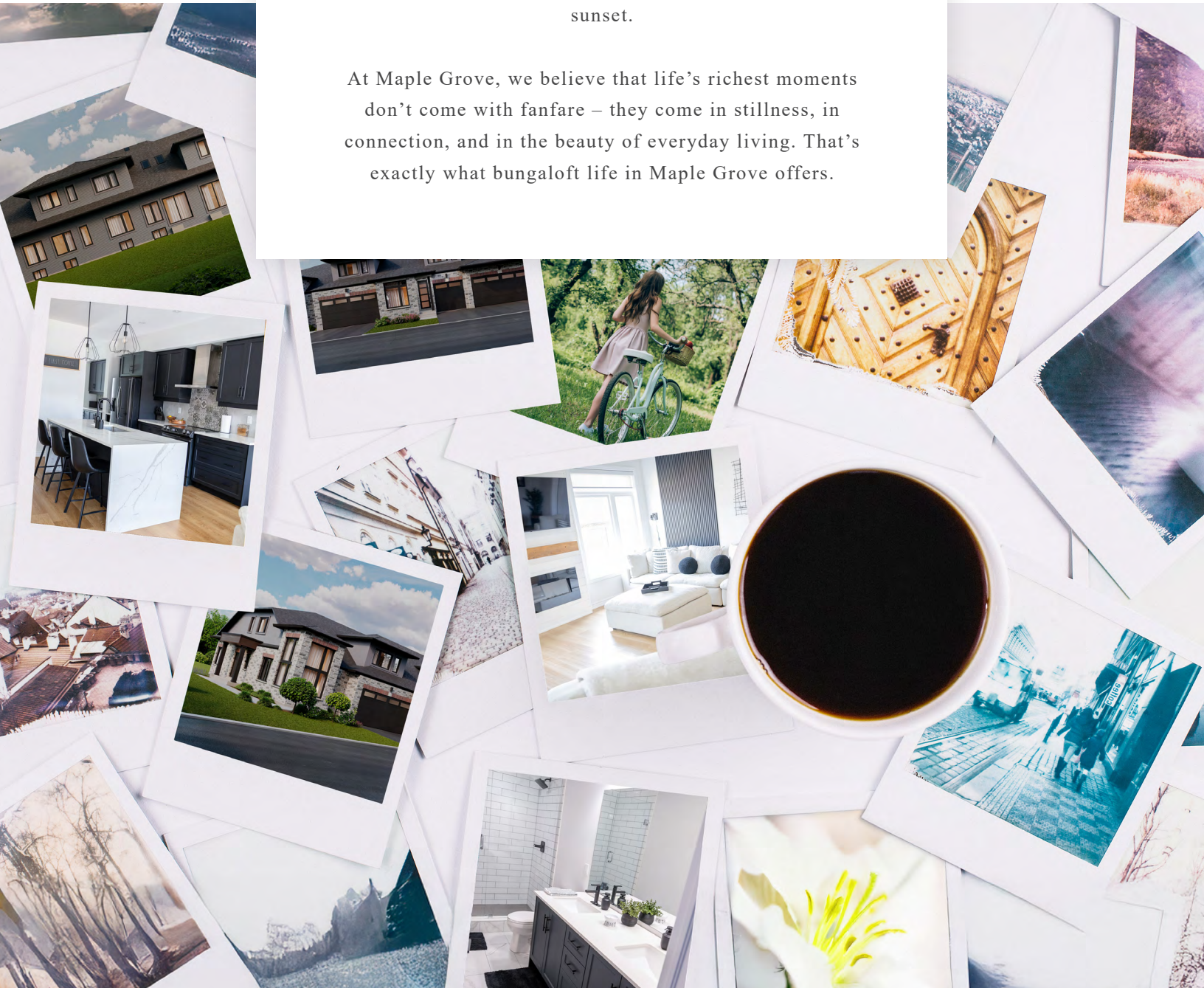


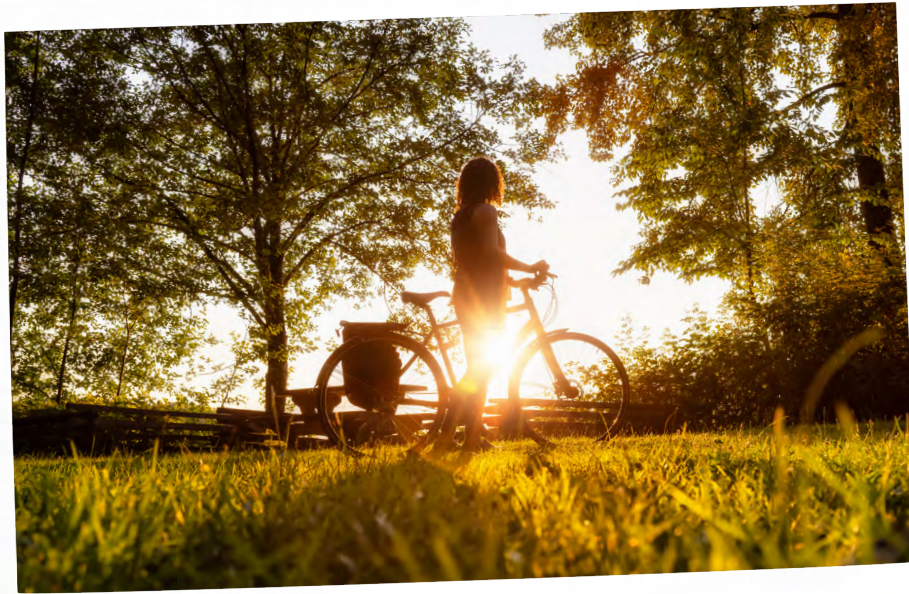
# Where Bungalow Living Offers a Fresh Album Full of Ease, Beauty and Connection

Imagine flipping through a box of old polaroids – snapshots of your life, frozen in time.

Morning coffee on the porch. Grandkids running barefoot in the yard. A walk along the river just before sunset.

At Maple Grove, we believe that life's richest moments don't come with fanfare – they come in stillness, in connection, and in the beauty of everyday living. That's exactly what bungalow life in Maple Grove offers.





Cambridge, Where Every Day Feels worth Capturing

*Your Best Life Yet!*

Tucked beside the Speed River and surrounded by lush green spaces, Maple Grove in Cambridge offers the perfect backdrop for Life's small but meaningful moments.

Your home is steps from scenic trails and conservation areas. A morning bike ride becomes a ritual. A quiet evening becomes a memory. This is a place where nature frames every chapter.



**5 minutes**

To the 401 and Hwy 24

**5 minutes**

To Local Cafes and Restaurants



**6 minutes**

Food basics, Shoppers Drug Mart, Fortinos, and other local amenity stores for your convenience.

**7 minutes**

To Chilligo Conservation Area



**10 minutes**

To Escarpment trails for the best hiking, biking and walking in the area



**15 minutes**

To at least 4 local golf courses including the Doon Valley Golf Course and Whistle Bear Golf Club



**30 minutes**

John C. Munro Hamilton Airport



# Welcome to Maple Grove in River Mill



A thoughtfully designed Master Planned Community - home to three parks, schools and over 9km of hiking, biking and walking trails including trails along the Speed River.

EXISTING





A Home Built For Moments

# *The Bungalow*

Bungalofs at Maple Grove are designed for living simply,  
beautifully and fully.

With open concept layouts, oversized windows, single level  
convenience, plus extra space for family & friends, you'll enjoy an  
easy flow of life creating memories every day.



Standards worth Capturing

# The Luxury

Whichever Starward Home captures your heart, it will be built with the same care of craftsmanship, design detail and luxury, including:

- 9' ceilings on main floors, cathedral ceiling on Great Room
- Wide plank vinyl flooring
- Contemporary colours, cabinetry and hardware
- Quartz countertops in all bathrooms and kitchens
- Oversized windows for abundant natural lighting
- Centrally located media panel for maximum wifi coverage



*Home Sweet Home*



*Family time*





# The Mulberry

2490 SQ FT

2 Storey Town

Enhanced End

3 Bedroom + Loft



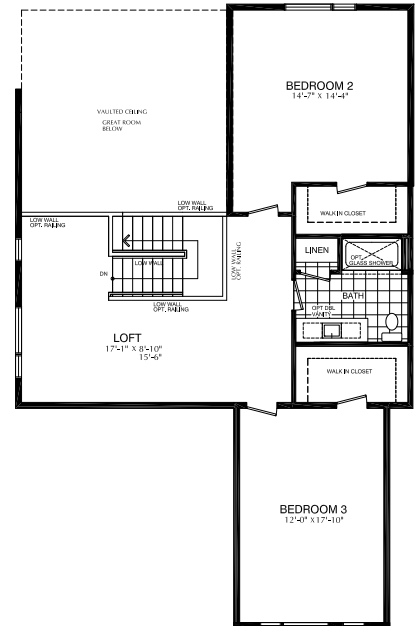
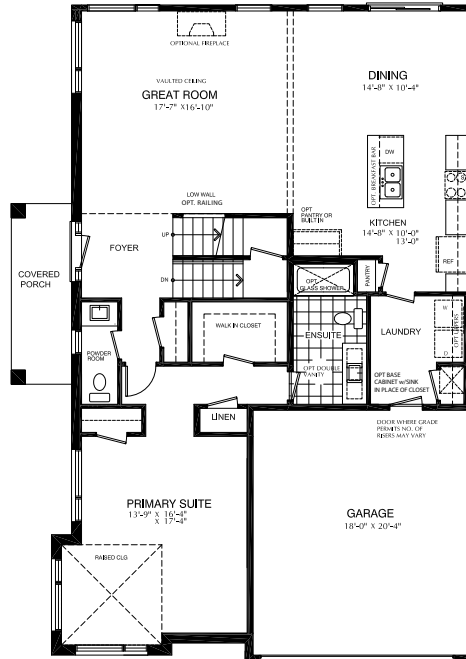
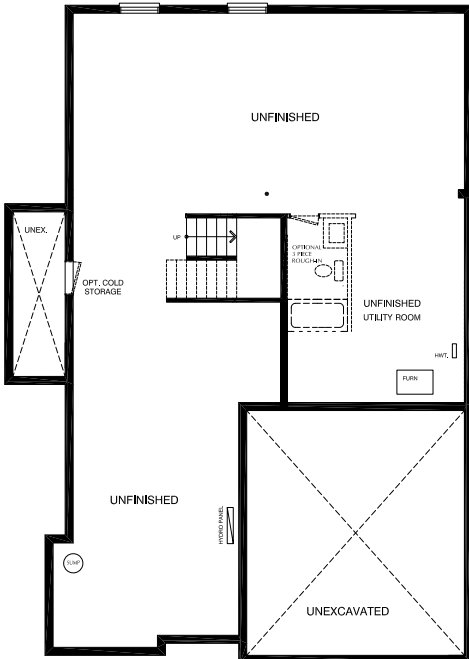
Scan for all the floor plan options or [click here](#)



Basement

Main Floor  
1445 SQ.FT.

Loft  
1046 SQ.FT.







# Features & Finishes

---

## LANDSCAPING

- a. Homes are graded with topsoil and sod installed in front and back yards.
- b. Landscaping as per plan.
- c. Walkway from driveway to front door.
- d. If required, concrete steps to be placed at all patio doors.
- e. Paved driveway to street line – rough and topcoat.
- f. Wood privacy screens will be installed between units where applicable.
- g. For a more appealing streetscape, all services are underground.

## CONCRETE

- a. Basement walls are poured 8" concrete reinforced with rebar.
- b. Exterior of foundation walls are finished with Delta Wrap & Spray.
- c. Foundation wall drainage includes 4" weeping tile covered with 6" of clear, crushed stone.

## EXTERIOR

- a. Windows are vinyl Thermopane, Low-E insulated glass, with a 25-year limited sealed glass warranty. Operating windows have screens in habitable areas. Operating windows per room, as per code.
- b. Exterior entrance door to be insulated, metal-clad door with glass panels as per plan.
- c. Facia, soffit and eavestrough to be pre-finished metal, as per plan.
- d. Roofs are clad with 25-year limited warranty, self-sealing shingles.
- e. Non-insulated, pre-finished metal garage door.

## DRYWALL AND INSULATION

- a. Finished rooms are drywalled, taped, sanded, primed and painted.
- b. Exterior walls have R22 insulation and attics have R60 insulation.
- c. Basement walls are wrapped with Basement Blanket R20 insulation to within 14" of slab floor.
- d. Metal channels or clips are screwed between ceiling drywall and trusses, to minimize truss uplift.
- e. Second floor living area and all bedrooms have textured finished ceilings with bordered trim.
- f. Smooth ceiling throughout all main floor areas and primary bedroom, excluding vaulted ceiling.
- g. Garage is fully drywalled, with rough coat tape only, except for firewalls.
- h. Grade permitting, a Man Door is included for direct access from garage to house.
- i. Acoustical Fire Batt between party walls.

## ELECTRICAL

- a. 100 AMP Electrical Service, with circuit breaker panel.
- b. 220V receptacle provided for stove and dryer
- c. Copper wiring throughout.
- d. Homes are equipped with exhaust fans in all finished bathrooms and finished laundry room.
- e. Smoke and Carbon Monoxide Detectors on all levels and in all bedrooms, as per code.
- f. Exterior electrical receptacles included, (1) on front porch and (1) at rear.
- g. Electrical receptacle in garage ceiling for future garage door opener.

- h. Doorbell chime included on the main floor.
- i. Flush mount ceiling fixtures included in all rooms (where applicable) and wall mounted light fixtures included over bathroom mirrors.
- j. Electrical supply with breaker provided for future dishwasher hook-up.
- k. Each home comes equipped 5 CAT5e data locations.
- l. White Decora style switches and receptacles throughout the home.
- m. Electrical receptacle included at the Electrical Panel for convenient future hook-ups

## HEATING

- a. The furnace is a brand name high efficiency, forced air unit.
- b. HRV included with switch next to thermostat, sized appropriately for whole house principal exhaust/ventilation.
- c. The gas hot water tank is a rental unit. Purchaser agrees to assume hot water tank rental agreements
- d. Supply and install air conditioning unit, sized as per approved HVAC design/heating plan
- e. Dryer vent to the exterior.
- f. Professional Duct Cleaning of your vents before you occupy your home.

## INTERIOR SELECTIONS

- a. Starward Homes welcomes you to personalize your new home at our Design Studio. Included in your contract are (2) interior selection appointments with one of our Interior Design Consultants. Appointments will be scheduled weekdays at either 9am or 1pm, for a maximum of 3 hours. If required, additional appointments can be purchased for \$500 per appointment.
- b. All interiors painted with flat paint in purchaser's choice of one (1) wall colour from Starward's curated colour palette.
- c. All interior trim and doors to be painted white.
- d. Interior doors are 2 panel design in a smooth finish.
- e. Plate glass mirrors in all bathrooms.
- f. Satin Chrome interior doorknobs and hinges. Privacy locks included for all bathrooms.

## FLOORING

- a. Luxury Vinyl plank through main floor as per plan from Starward's curated included selections.
- b. Ceramic tile in Ensuite and Second Floor Bathrooms as per plan from Starward's curated included selections.
- c. Choice of carpet, one (1) colour, from Starward's curated included selections, includes standard underpad.

## WOODWORK & STAIRS

- a. Paint grade MDF 3 7/8" baseboards and 2 3/4" casing.
- b. All half walls to be capped in MDF and painted white.
- c. All finished staircases from Main Floor to Loft are carpet grade with painted stringers, oak stained spindles and railings as per plan.
- d. Basement staircases and railings are utility grade.

## CABINETS & COUNTERTOPS

- a. Choice of Oak or Maple Veneer, MDF painted textured Melamine or 3DL flat panel cabinets from Starward's curated included selection.
- b. Bathrooms include white quartz with undermount sink.
- c. Cabinet provision for future dishwasher in Kitchen.

- d. Kitchen has Quartz Countertop, from Starward's curated included selections, and undermount, stainless steel sink.

## PLUMBING

### MAIN BATH & ENSUITE

- a. Modern 60x30 acrylic bathtub.
- b. Moen Chateau chrome, single lever lavatory faucet with pop-up drains in all bathrooms.
- c. Moen Chateau chrome, pressure balance shower faucet and showerhead for all tub/showers.
- d. American Standard round front, standard height toilets.
- e. White bathroom plumbing fixtures throughout.

### OTHER

- a. PEX piping to be used throughout.
- b. Shutoff Valves on all water supplies.
- c. One hose bib in garage and one hose bib with backyard access.
- d. Drain "T" for future dishwasher.
- e. Sump pumps as required.

### IN GENERAL

- a. Kiln dried floor joists.
- b. Interior walls to be 2" x 4" or better.
- c. Deadbolt locks on all exterior swing doors.
- d. Main level ceiling heights are approximately 9' except where bulkheads or dropped ceilings are required.

### POLICIES & PROCEDURE

**NOTE #1:** If any selection is not available at the time of installation, the Builder reserves the right to make substitutions of equal or better value.

**NOTE #2:** It is the responsibility of the Purchasers to water and care for the lawn, gardens and trees. Starward Homes is not responsible for growth.

**NOTE #3:** Drywall repairs are made once within the Builder's warranty period. Drywall repairs will not be repainted.

**NOTE #4:** In making colour and material selections and upgrades, the Purchaser acknowledges and accepts the following:

- a. All coloured materials, especially flooring, may be subject to fading or yellowing after use or exposure to sunlight or discolouration at wall and subfloor joints due to the filtering process that occurs with pollutants and candles in forced air heating and such fading, yellowing, discolouration and air quality will not be covered by a warranty.
- b. All natural materials such as marble and wood are subject to natural variations in colour and grain; man-made materials such as ceramic tile and broadloom are subject to pattern, shade and colour variations.
- c. Transition strips shall be used to bridge flooring height differentials due to flooring material thicknesses.
- d. The homeowner has a responsibility to maintain indoor humidity levels through humidification, ventilation, air conditioning or dehumidification to prevent permanent, irreversible damage. A Hygrometer can be used to monitor indoor humidity levels. Areas around heat registers and those exposed to concentrated sunlight may be more susceptible. Wood filler may be used for repairs.



## Meet your Builder

Founded in Hamilton more than 100 years ago, Starward is a family business, having been passed along four generations of the Campbell family.

Starward has designed and created an impressive collection of distinctive neighbourhoods and exceptional homes and is widely recognized as an innovative industry leader in new community development. Having popularized the bungalow community concept, Starward is considered an expert in building “main-floor living” homes designed for today’s active adult. With an ever-expanding portfolio that includes two and three-storey towns, single family homes and estate lots, Starward Homes’ vision is forged by the commitment to build beautiful communities that resonate with the desires of today and tomorrow’s homebuyer.

Renowned for commitment to superior quality, innovation and integrity, each home is built with an unrivalled attention to detail, carefully designing, building and selecting every included feature to ensure Starward Homes continues to set the bar for excellence as an industry leader.

With such a long history in business, Starward knows that the true test of design, construction and service comes long after the banners and flags are gone. For more info, visit

[www.starwardhomes.com](http://www.starwardhomes.com)



*Funny Moments*



## What Will Your Next Poloroid Capture?

A quiet bike ride in the early morning?  
A beautiful birthday party in the backyard?  
Blowing bubbles in the Park?

Start your next chapter – and your next memory – in a  
Maple Grove Bungalow.

Now Selling Limited lots in one of Cambridge's most  
natural, connected communities.

Visit our sales centre or schedule a meeting today.

Because the best moments are the ones you  
live in every day.